

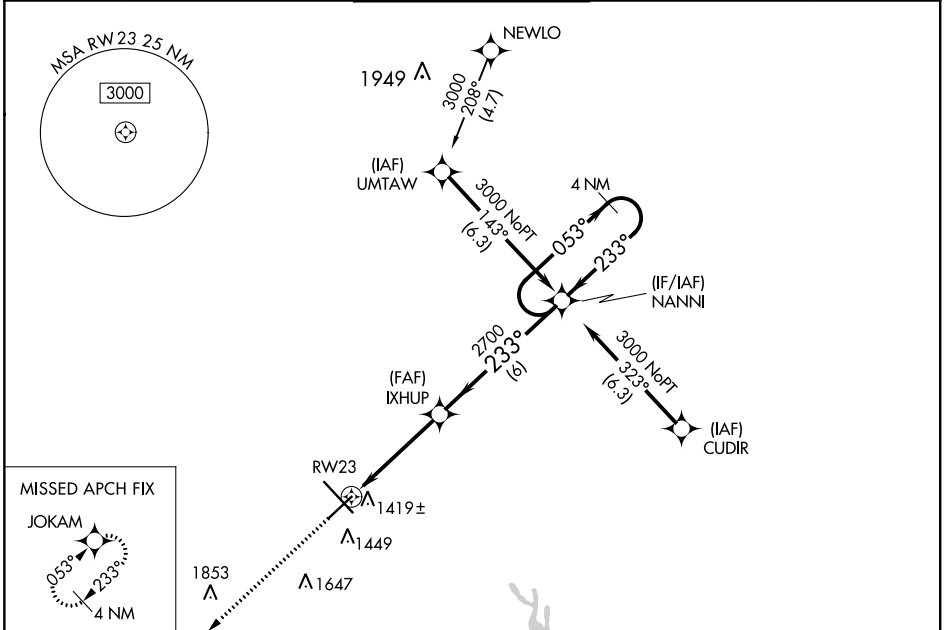
WAAS CH 87119 W23A	APP CRS 233°	Rwy Idg TDZE Apt Elev	6819 1295 1297
--	------------------------	-----------------------------	---

RNAV (GPS) RWY 23

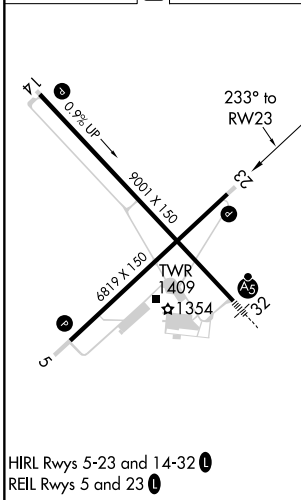
MANSFIELD LAHM RGNL (MFD)

RNP APCH.	MISSED APPROACH: Climb to 3000 direct JOKAM and hold.
For uncompensated Baro-VNAV systems, LNAV/VNAV NA below -20°C (-4°F) or above 54°C (130°F). Rwy 23 helicopter visibility reduction below ¾ SM NA.	

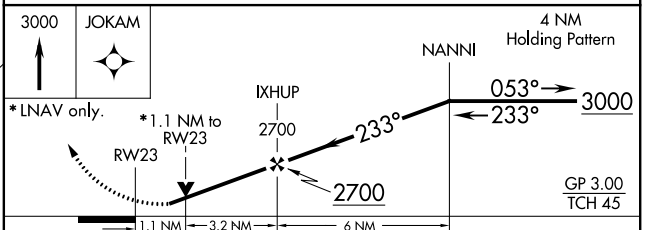
ATIS 125.3	CLEVELAND APP CON * 124.2 360.65	MANSFIELD TOWER * 119.8 (CTAF) 291.775	GND CON 121.8 291.775	UNICOM 122.95
----------------------	--	--	---------------------------------	-------------------------



ELEV 1297	D	TDZE 1295
-----------	----------	-----------



HIRL Rwy 5-23 and 14-32
 REIL Rwy 5 and 23



CATEGORY	A	B	C	D
LPV DA		1545-7/8	250 (300-7/8)	
LNAV/VNAV DA		1619-1 1/8	324 (400-1 1/8)	
LNAV MDA	1680-1	385 (400-1)	1680-1 1/8	385 (400-1 1/8)
C CIRCLING	1760-1	463 (500-1)	2000-2 703 (800-2)	2000-2 1/4 703 (800-2 1/4)