

MANSFIELD, OHIO

VORTAC MFD
108.8
 Chan **25**

APCH CRS
130°

Rwy Ldg **9001**
 THRE **1246**
 Arprt Elev **1297**

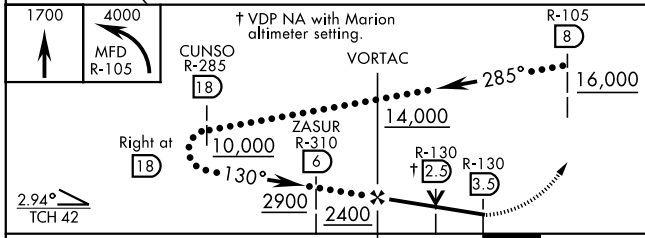
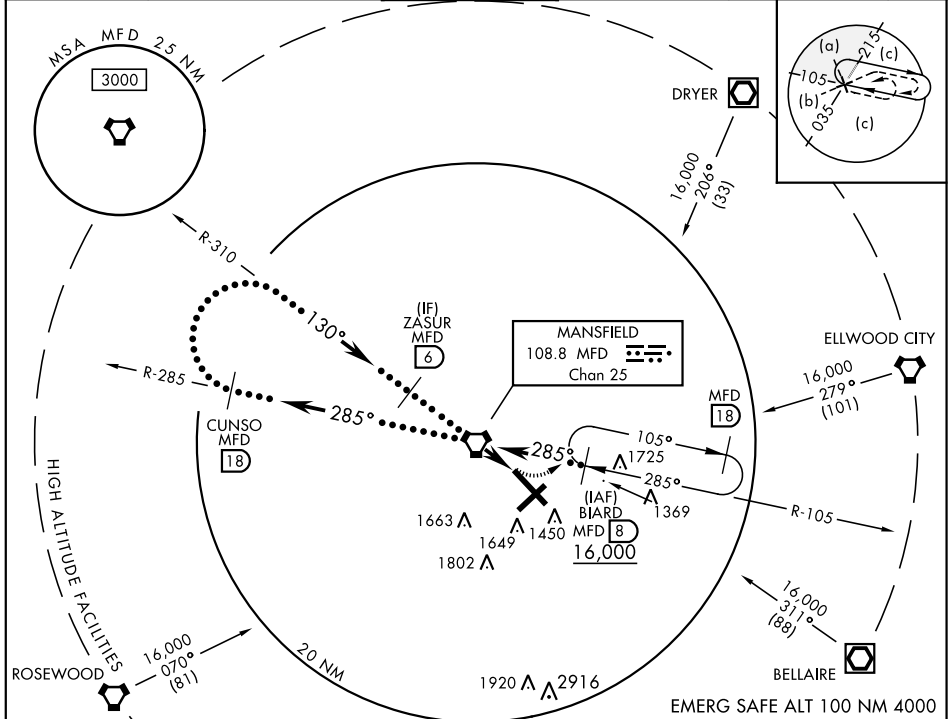
HI-VOR/DME or TACAN RWY 14

JAL-860 [USAF]

MANSFIELD LAHM RGNL (KMFD)

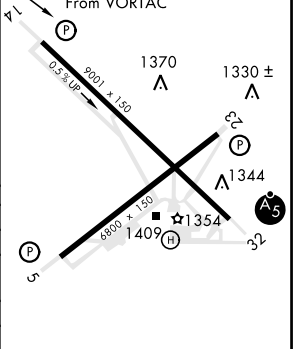
When control tower closed use Marion altimeter setting. MISSED APPROACH: Climb to 1700, then climbing left turn to 4000 on MFD VORTAC R-105 to BIARD/8 DME and hold, continue climb-in-hold to 4000.

| | | | | | |
|----------------------|---|---------------------------------------|-------------------------------|-------------------------|-----|
| ATIS 125.3 | MANSFIELD APP CON 124.2 390.8 | MANSFIELD TOWER 119.8 325.8 | GND CON 121.8 325.8 | UNICOM 122.95 | ASR |
|----------------------|---|---------------------------------------|-------------------------------|-------------------------|-----|



EMERG SAFE ALT 100 NM 4000

| | |
|------------------|------------------|
| ELEV 1297 | THRE 1246 |
|------------------|------------------|



| CATEGORY | C | D | E |
|-----------------------------------|--------------|--------------|--------------|
| S-14 | 1620-1 | 374 | (400-1) |
| CIRCLING | 1760-1½ | 1880-2 | 2000-2½ |
| | 463 (500-1½) | 583 (600-2) | 703 (800-2½) |
| MARION ALTIMETER SETTING MINIMUMS | | | |
| S-14 | 1740-1¾ | 494 | (500-1¾) |
| CIRCLING | 1880-1½ | 2000-2¼ | 2120-3 |
| | 583 (600-1½) | 703 (800-2¼) | 823 (900-3) |

HIRL Rwy 5-23 and 14-32
 REIL Rwy 5 and 23

MANSFIELD, OHIO

40°49'N-82°31'W

MANSFIELD LAHM RGNL (KMFD)

Amdt 5 26JUL12

HI-VOR/DME or TACAN RWY 14

EC-2, 07 OCT 2021 to 04 NOV 2021

EC-2, 07 OCT 2021 to 04 NOV 2021